



1951TM
Progressions

Specification Guide 2024

Table of Contents

Door Styles

Cody 06
Garrett.....10
At a Glance 12

Product Specifications

An Inside Look..... 16
Cabinet Face Dimensions 18
Wall Cabinets 20
Base Cabinets 21
Vanity Cabinets22
Accessory Items23
Molding..... 26
Hardware27
Functional Kitchen Additions..... 28
Important Information 30



The 1951 Progressions Advantage



Cody Pebble



Your trusted partner

1951 is more than just the year we established our business. It's when we established our commitment to exceeding distributor expectations. With classic styles that transcend trends. Quality products at multiple price points. And dedicated resources and tools to help you succeed.



We focus on cabinets

For more than 70 years, we've cared about the end-product as much as you and your customers do. When you team up with 1951 Cabinetry, you benefit from years of experience and refinement. That means high quality materials, craftsmanship, and service—start to finish.



Quality meets value

1951 Progressions showcases modern styling in an economical design offering. We make it easy to choose the perfect combination of features for your needs and budget.

Door Styles

The 1951 Progressions collection presents a choice of two shaker door designs available in three popular finishes—White, Pebble, and Umber—blending style and affordability.





Cody Pebble



Features

Construction

Routed MDF with
Recessed Panel

Door Details

Full Overlay

Material

Thermofoil

Hardware

Required



Cody

White Door Style

The color white has a remarkable impact on any living space, with its pure and pristine quality. It makes any room appear larger and more inviting, saturating its environment with a sense of spaciousness and airiness. White is timeless and elegant, providing a blank canvas that harmonizes effortlessly with various design styles and color schemes. Its clean and bright aesthetic fosters a sense of serenity and freshness, especially in spaces such as kitchens. White is a versatile choice that allows for creativity and personalization, whether through contrasting accents or a minimalist, contemporary vibe.



Cody White



Features

Construction

Routed MDF with
Recessed Panel

Door Details

Full Overlay

Material

Thermofoil

Hardware

Required



Cody

Pebble Door Style

Pebble is a fusion of warm brown and subtle gray, creating a unique and versatile aesthetic. The result is a rich, earthy hue that emanates a sense of comfort and sophistication. This finish strikes a harmonious balance between traditional and contemporary design, making it an ideal option for a variety of decor styles.



Cody Pebble



Features

Construction

Mortise & Tenon

Door Details

Full Overlay

Material

Hardwood

Hardware

Required



Garrett

Umber Door Style

Umber gives a timeless elegance and warmth. It highlights the natural beauty of wood through its deep, earthy tones that convey a sense of authenticity and comfort. The intricate patterns and texture create a rich tactile and visual experience, making any space feel welcoming and cozy. Umber not only offers a classic and enduring appeal but also adds a touch of luxury.



Garrett Umber

At a Glance



Care & Cleaning

While our laminate, staining, and wood finishing processes promote durability, care should be taken to preserve the original factory finish:

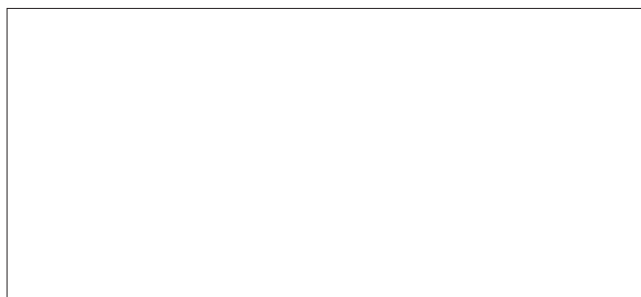
- Wipe up spills immediately
- Use mild soaps only
- Be sure to read all cabinet care guidelines and cleaning product instructions carefully

Choose Your Material



Hardwood

Hardwood cabinetry has a dense structure and comes from a combination of deciduous trees such as maple, beech, birch, or poplar. Natural colors range from light blonde to dark reddish-brown tones. These hardwoods may contain mineral streaks, slight differences in graining, and color variations.

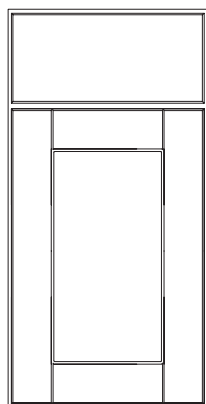


Thermofoil

Thermofoil is a process whereby a thick vinyl film is bonded permanently to a warp-resistant engineered wood core. Because the color is consistent throughout the film, the surface is durable, easy to clean, and resistant to chipping and cracking.

Door Styles and Finishes

Cody



Door: Recessed Panel
Overlay: Full Overlay
Construction: Routed MDF
Hardware: Required

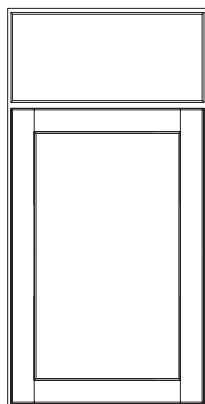


**White Thermofoil
1SSW**

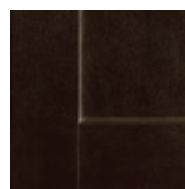


**Pebble Thermofoil
1SDV**

Garrett



Door: Recessed Panel
Overlay: Full Overlay
Construction: Hardwood
Mortise & Tenon
Hardware: Required



**Umber Stain
1SJM**

Product Specs

Create the kitchen that perfectly fits your lifestyle. You'll find the quality construction and features at prices that help you get the most kitchen for your budget—and years of enjoyment.



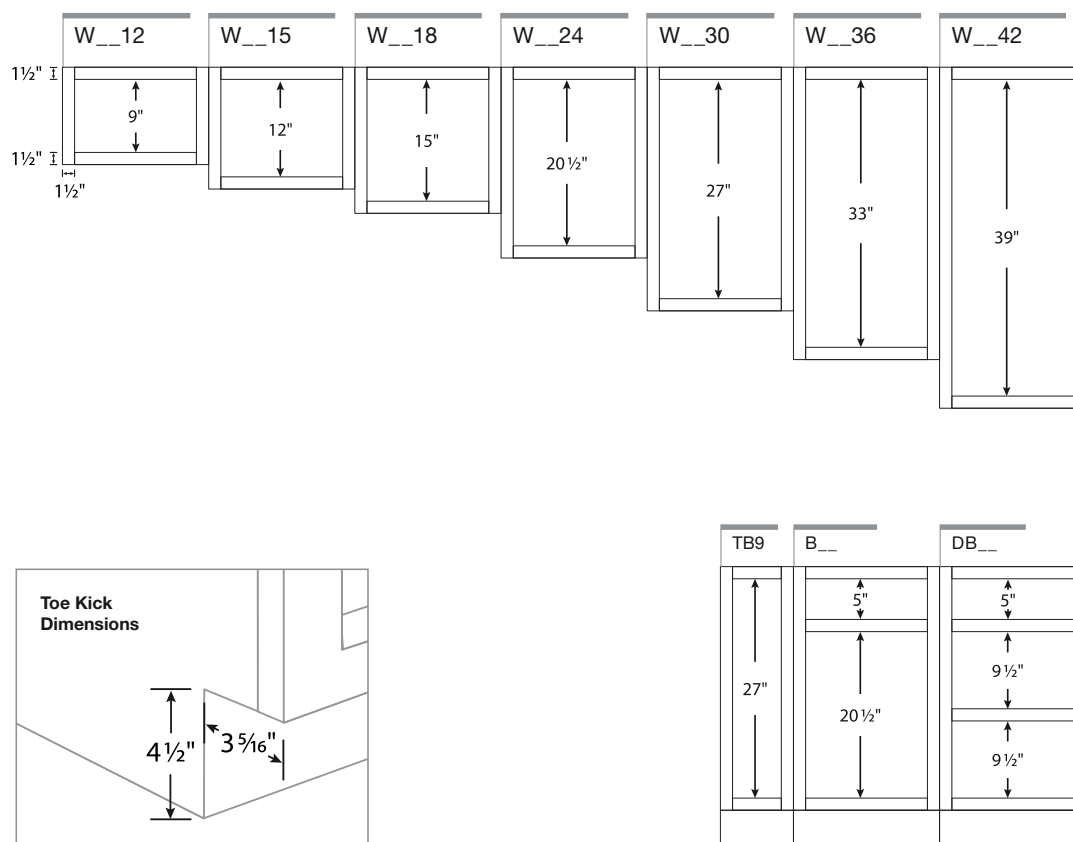


Garrett Umber

An Inside Look

Cabinet Opening Dimensions

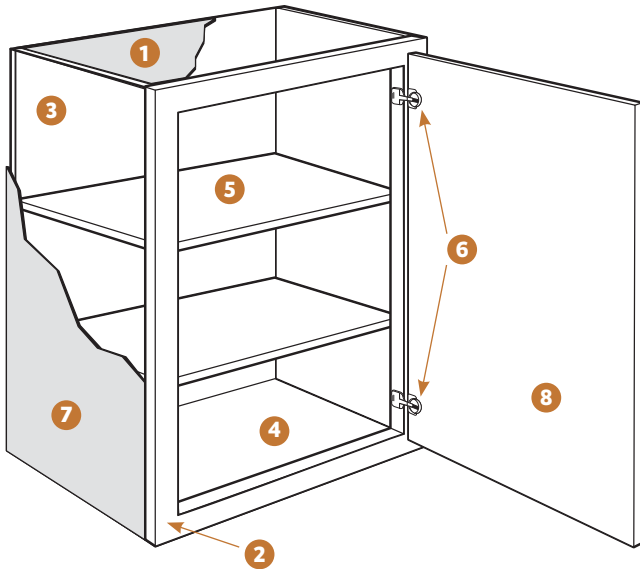
Illustrations specify dimensions of vertical stiles and horizontal rails, inset toe kick, and standard interior opening heights. When selecting cabinetry for installation above or near any appliance, refer to the appliance manufacturer's specification for clearance and venting requirements.



All cabinetry manufactured by 1951 Progressions is certified by the Kitchen Cabinet Manufacturers Association (KCMA).

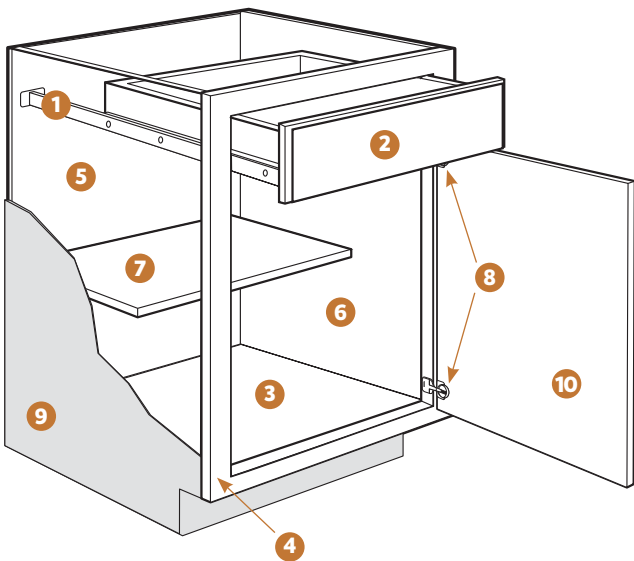
1951 Progressions has received certification by KCMA Environmental Stewardship Program on all products.

Cabinet Construction



Wall Cabinets

- 1 **Top/Bottom Panels:** $\frac{3}{8}$ " engineered wood
- 2 **Face Frame:** 1 $\frac{1}{2}$ " wide frame material
- 3 **Back Panel:** Full $\frac{3}{8}$ " back panel
- 4 **Interiors:** Natural wood-grain laminate finish on engineered wood
- 5 **Shelves:** $\frac{3}{4}$ " thick adjustable shelves
- 6 **Hinges:** Fully concealed and adjustable
- 7 **End Panels:** $\frac{1}{2}$ " engineered wood with laminated exterior to match cabinet finish
- 8 **Door:** Reversible door on single-door cabinets for left or right opening; hinged on the left from the factory; double-door cabinets are butt doors with no center stile



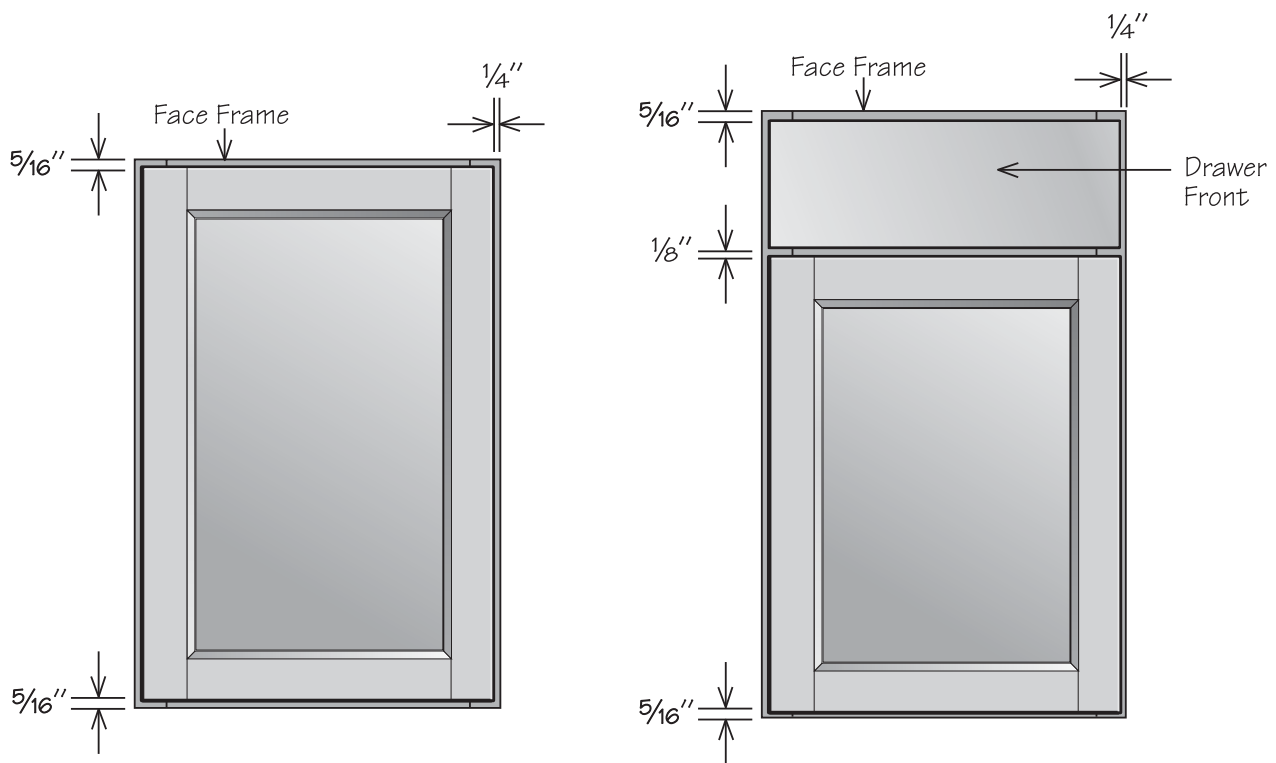
Base Cabinets

- 1 **Drawer Glides:** $\frac{3}{4}$ " access ball bearing
- 2 **Drawer Box:** Hardwood, 4-sided drawer box with fully encapsulated bottom
- 3 **Bottom Panels:** $\frac{3}{8}$ " engineered wood
- 4 **Face Frame:** 1 $\frac{1}{2}$ " wide frame material
- 5 **Back Panel:** Full $\frac{3}{8}$ " back panel with a natural laminate interior
- 6 **Interiors:** Natural wood-grain laminate finish on engineered wood
- 7 **Shelf:** $\frac{3}{4}$ " thick adjustable half-depth shelf
- 8 **Hinges:** Fully concealed and adjustable
- 9 **End Panels:** $\frac{1}{2}$ " engineered wood with laminated exterior to match cabinet finish
- 10 **Door:** Reversible door on single-door cabinets for left or right opening; hinged on the left from the factory; double-door cabinets are butt doors with no center stile

Cabinet Face Dimensions

Full Overlay

Full overlay doors are sized to cover nearly all of the cabinet face frame. Full overlay door styles require decorative hardware. To facilitate proper door operation, include at least a 1" filler between the hinged side of full overlay door styles and deeper adjacent objects including cabinets, walls, appliances, and countertops.



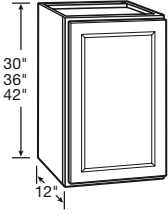


Cody Pebble



Cody White

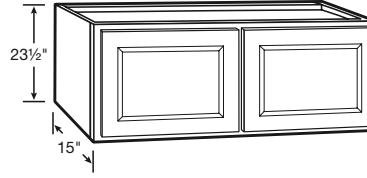
Wall Cabinet | 1 Door



- Includes two adjustable shelves
- Hinged left, field reversible

30" HIGH	36" HIGH	42" HIGH
W1230	W1236	W1242
W1530	W1536	W1542
W1830	W1836	W1842
W2130	W2136	W2142
W2430	W2436	W2442

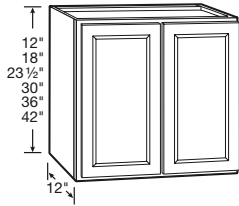
Wall Cabinet | 2 Butt Doors and 15" Deep



- Includes one adjustable shelf

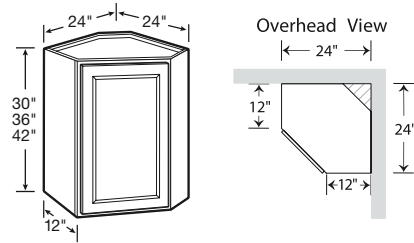
24" HIGH · 1 Shelf
W3024 X 15DP BUTT

Wall Cabinet | 2 Butt Doors



12" HIGH · No Shelf	18" HIGH · No Shelf	24" HIGH · 1 Shelf
W3012 BUTT	W3018 BUTT	W3024 BUTT
W3612 BUTT	W3618 BUTT	W3624 BUTT
30" HIGH · 2 Shelves	36" HIGH · 2 Shelves	42" HIGH · 2 Shelves
W2730 BUTT	W2736 BUTT	W2742 BUTT
W3030 BUTT	W3036 BUTT	W3042 BUTT
W3330 BUTT	W3336 BUTT	W3342 BUTT
W3630 BUTT	W3636 BUTT	W3642 BUTT

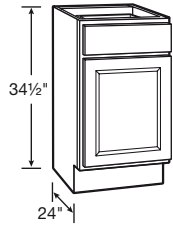
Corner Wall Cabinet



- Installs in a 24" x 24" wall area
- 30" high includes one adjustable shelf
- 36" high and 42" high include two adjustable shelves
- Hinged left, field reversible

30" HIGH	36" HIGH	42" HIGH
CW2430	CW2436	CW2442

Base Cabinet | 1 Door and 1 Drawer

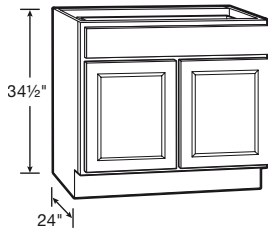


- Ball-bearing drawer glides
- One half-depth adjustable shelf included
- Hinged left, field reversible

34 1/2" HIGH

B12	B21
B15	B24
B18	

Base Cabinet | 2 Butt Doors and 1 Drawer

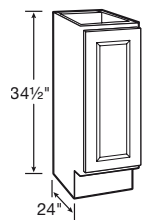


- Ball-bearing drawer glides
- One half-depth adjustable shelf included

34 1/2" HIGH

B27 BUTT
B30 BUTT
B33 BUTT
B36 ITD BUTT

Full-Height Base Cabinet | 1 Door

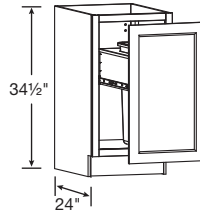


- One half-depth adjustable shelf included
- Hinged left, field reversible

34 1/2" HIGH

TB9

Full-Height Base Cabinet | 1 Door with Wastebasket Pull-Out

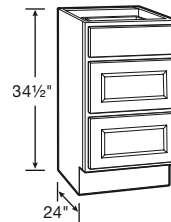


- Includes a 48-quart waste container

34 1/2" HIGH

BWBT18-1 FH

Drawer Base Cabinet | 3 Drawers

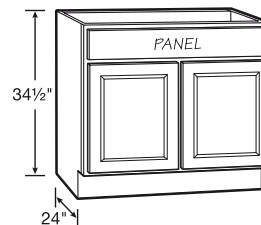


- 18" wide and 24" wide include ball-bearing drawer glides
- 30" wide and 36" wide include full-extension, heavy-duty drawer glides on all three drawers
- Deep drawers feature five-piece drawer fronts

34 1/2" HIGH

DB18	DB30
DB24	DB36 ITD

Sink/Cooktop Base | 2 Butt Doors and 1 Panel

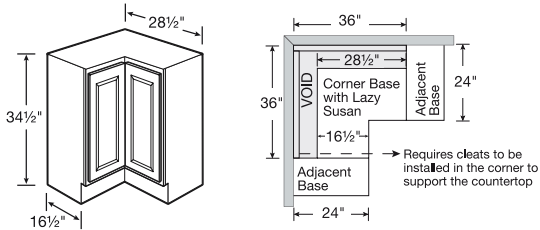


- Full-height back panel
- No shelf
- Subtract 1 1/2" from width and 1" from depth for available sink bowl opening
- Refer to sink/cooktop manufacturer's specifications for adequate clearance and required installation materials
- Touch-up kit included

34 1/2" HIGH

SB30 BUTT TU
SB36 BUTT TU

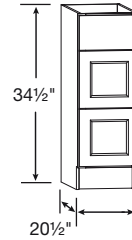
Corner Base Carousel | Spin Unit



- Installs in a 36" x 36" wall area
- Two-piece overlay door hinged together in the middle
- Two 360° independently rotating metal racks
- Exterior side panels are natural laminate
- Hinged left, reversible in field
- Additional space recommended if appliance is installed on the hinged side of this cabinet for proper door operation
- If unit has an exposed side, order an end panel separately

34 1/2" HIGH
CAR36

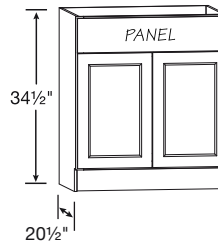
Vanity Drawer Base | 3 Drawers



- Deep drawers feature five-piece drawer fronts

34 1/2" HIGH
VDB1234H
VDB1534H
VDB1834H

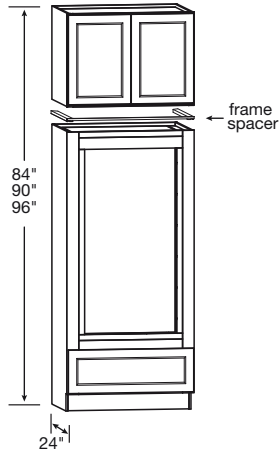
Vanity Sink Base | 2 Butt Doors and 1 Drawer Panel



- No shelf
- Subtract 1 1/2" from width and 1 1/8" from depth for available sink bowl opening
- Refer to sink manufacturer's specifications for adequate clearance and required installation materials

34 1/2" HIGH
VSB2434H BUTT
VSB2734H BUTT
VSB3034H BUTT
VSB3334H BUTT
VSB3634H BUTT

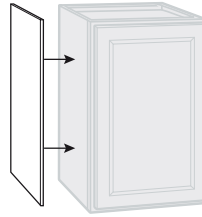
Double Oven Cabinet | 2 Butt Doors and 1 Drawer



- Includes drawer with full-extension, heavy-duty drawer glides
- Includes 24" deep wall cabinet (ships separately)
- Overhead wall cabinet is not pre-installed to oven cabinet, comes as two pieces, boxed separately
- Rails and stiles around oven opening are trimmable
- Cut-out dimensions:
 - › Width: 24" minimum, 30" maximum
 - › Height: 47⁵/₈" minimum, 52¹/₈" maximum
- Frame spacer included in OVD339624 BUTT only
- 96" high double oven overhead wall cabinet is 23¹/₂" high

84" HIGH	90" HIGH	96" HIGH
OVD338424 BUTT	OVD339024 BUTT	OVD339624 BUTT

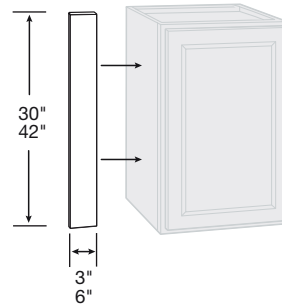
Veneer End Paneling



- Finished veneer panels fit flush
- Umber panels feature stained veneers
- White and Pebble panels are laminate
- Wall panels are 1¹/₄" deep, 30" or 42" high
- Base panels are 2³/₄" deep x 34¹/₂" high
- Finished panel is 48" wide x 34¹/₂" high

WALL PANEL	BASE PANEL	FINISHED PANELING
WEP30 WEP42	BEP34	FP4834

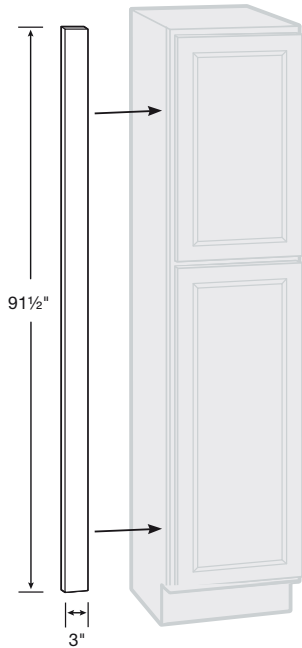
Wall & Base Fillers



- 3/4" thick
- Cody door styles feature wrapped-plywood finished on the face only
- Garrett door style features hardwood finished on the face only

3" FILLER	6" FILLER
UF3P UF342P	UF6P UF642P

Tall Filler

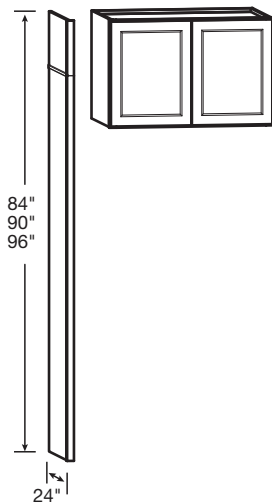


- 3/4" thick
- Cody door styles feature wrapped-plywood finished on the face only
- Garrett door style features hardwood finished on the face only

91 1/2" HIGH

UF392P

Refrigerator Return Kit

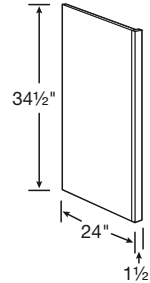


- Kit includes one 84" tall end panel, one 12" tall panel, one 6" tall panel, and one piece of scribe molding
- Kits and Wall Cabinets combine to achieve 84", 90", or 96" overall heights
- Pairs with 36" wide wall cabinets, sold separately—see Wall Cabinets section
- Refrigerator Return Kit does not create a stand-alone cabinet; must be anchored to other cabinets/wall studs to be secure

96" HIGH

RR96

Dishwasher Return

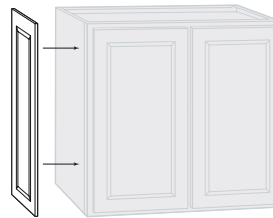


- Reversible for left or right installation
- Exterior finish to match
- Field trimmable to 1"
- Can be notched for toe kick in the field

34 1/2" HIGH

DWR1_5

Decorative Matching Doors



WALL

12" Deep

DMDW30
DMDW36
DMDW42

BASE

15" Deep

DMDW30 15D

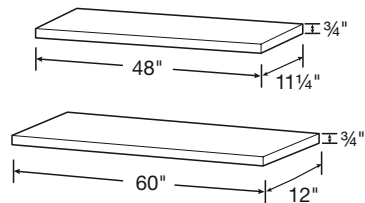
18" Deep

DMDW30 18D

24" Deep

DMDB

Finished Shelves



- 3/4" depth difference between shelf lengths
- Laminate finish on five sides

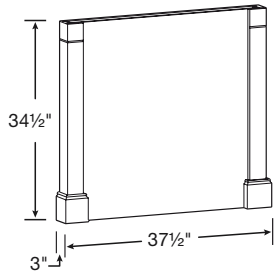
48" WIDE

11 1/4" Deep
FS4812

60" WIDE

12" Deep
FS6012

Decorative Island End Panel Kit

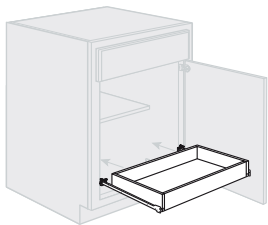


- One post ships loose
- Panel can be cut to accommodate different depths

34 1/2" HIGH

ISLAND PANEL KIT

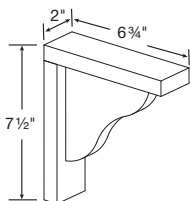
Sliding Shelf Kit



- Ball-bearing drawer glides
- Hardwood drawer box SSK24 fits in 24" wide base
- Hardwood drawer box SSK30 fits in 30" wide base
- Ready to assemble accessory kit requiring field installation
- Kit includes sliding shelf and all hardware

SSK24
SSK30

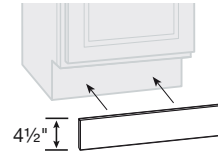
Countertop Corbel



- For decorative use only

CS8

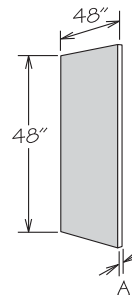
Toe Kick



- 91 1/2" long

BTK8

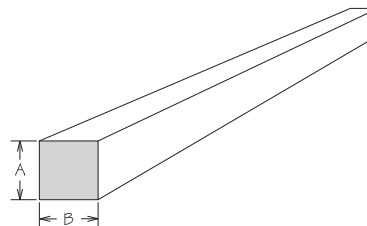
Cabinet Repair Material



- Back features 3/16" MDF finished on one side with a natural woodgrain look
- Floor features 1/2" thick particleboard finished on both sides with a natural woodgrain look

BACK	A	FLOOR	A
BACK-W48X48	3/16"	FLOOR48X48	1/2"

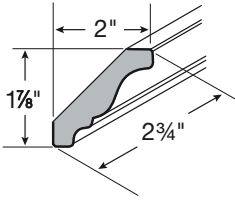
Cleats



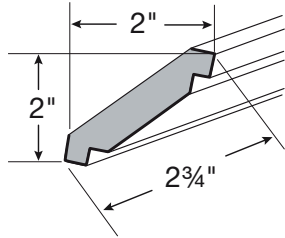
- Unfinished

	A	B	LENGTH
HWC 1/2X1/2X91.5	1/2"	1/2"	91 1/2"
HWC 3/4X3/4X91.5	3/4"	3/4"	91 1/2"
HWC 1X2X91.5	3/4"	1 1/2"	91 1/2"
HWC 2X4X91.5	1 1/2"	3 1/2"	91 1/2"

Crown Moldings



TRADITIONAL CROWN



SHAKER CROWN

- 91 1/2" long
- Bold line indicates finished surfaces

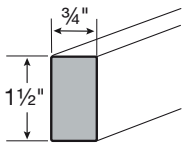
TRADITIONAL CROWN

CM8

SHAKER CROWN

ACM8

Molding Stock

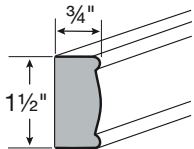


- 91 1/2" long
- Bold line indicates finished surfaces

SQUARE EDGE

SS1_596

Light Rail Molding

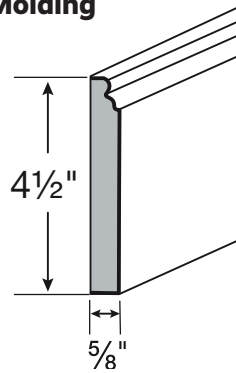


- 91 1/2" long
- Bold line indicates finished surfaces

DECORATIVE EDGE

LBM8

Base Molding

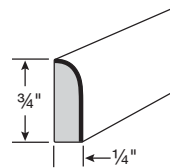


- 91 1/2" long
- Bold line indicates finished surfaces

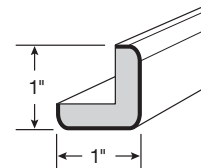
BASE

CLBM8

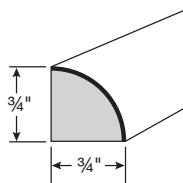
Trim Molding



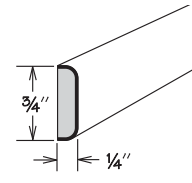
SCRIBE



OUTSIDE CORNER



QUARTER ROUND



BATTEN

- 91 1/2" long
- Bold line indicates finished surfaces

SCRIBE

SM8

QUARTER ROUND

SHM8

OUTSIDE CORNER

OCM8

BATTEN

BM8

Classic Knob | Satin Nickel



KNOB 1173SN

Classic Pull | Satin Nickel



- 3" center
- Overall length 4 $\frac{1}{2}$ "

PULL 1708SN

T-Bar Pull | Satin Nickel



- 3" center
- Overall length 5"

PULL 1701SN

Functional Kitchen Upgrades

Smart additions increase functionality for a kitchen that's a pleasure to use.

Functional additions help homeowners unclutter their counters and drawers. They get more work and storage space, and instant access to kitchen tools. These additions make life in the kitchen a piece of cake.



Standard Butt Doors on Cabinets 27" Wide and Up



Fully Concealed and Adjustable Hinges



Island End Panels



Refrigerator Return Kit



Fully Assembled Wastebasket Pull-Out



3-Drawer Base

Important Information

Lifetime Limited Warranty

The manufacturer of 1951 Progressions hereby warrants to the original purchaser, for residential applications only, that all 1951 Progressions, cabinets and accessories, are free from defects in materials and workmanship. This warranty runs for as long as you own your home and begins upon the date of delivery to you. This warranty is expressly limited to repair or replacement of the defective part at the discretion of the manufacturer of 1951 Progressions, and does not include labor for removal or replacement. This warranty does not extend to defects caused by improper handling, storage, installation, assembly or disassembly, intentional damage, product modifications, exposure to the elements including humidity which may result in warping or splitting, accidental misuse, abuse or negligence.

Natural woods may vary in texture, color and wood grain, and exhibit subtle changes as they age. For example, wood joints may eventually have visible cracking around the joint area and cabinet colors may darken or lighten over time. Sunlight, smoke, moisture, household cleaners and other environmental conditions may cause materials to vary from their original color and/or to warp, split or crack. These variations are considered to be the nature of the material in relation to its environmental exposure and are not covered under this warranty.

Limitations & Disclaimers

THE MANUFACTURER OF 1951 PROGRESSIONS MAKES NO OTHER WARRANTIES OTHER THAN THOSE SET FORTH HEREIN AND ALL OTHER WARRANTIES ARE HEREBY DISCLAIMED. THE IMPLIED WARRANTIES OF MERCHANTABILITY AND FITNESS FOR A PARTICULAR PURPOSE ARE LIMITED IN DURATION TO THE LENGTH OF THE LIMITED WARRANTY PERIOD. THE LIMITED WARRANTIES SET FORTH HEREIN ARE LIMITED TO THE FIRST AND ORIGINAL BUYER AND ARE NOT TRANSFERABLE THEREAFTER. IN NO EVENT SHALL THE MANUFACTURER OF 1951 PROGRESSIONS BE LIABLE FOR INCIDENTAL OR CONSEQUENTIAL DAMAGES TO THE PURCHASER OR TO ANY THIRD PARTY, INCLUDING, WITHOUT LIMITATION, DAMAGES ARISING FROM PERSONAL INJURY, LOST PROFITS, LOSS OF BUSINESS OPPORTUNITY, LOSS OF PROPERTY, ECONOMIC LOSSES, OR STATUTORY OR EXEMPLARY DAMAGES, WHETHER FROM NEGLIGENCE, WARRANTY, STRICT LIABILITY OR OTHERWISE. Some states do not allow the exclusion or limitation of incidental or consequential damages, or limitations on how long an implied warranty lasts, so the above limitations and exclusions may not apply to you. This warranty gives you specific legal rights, and you may also have other rights, which vary from state to state.

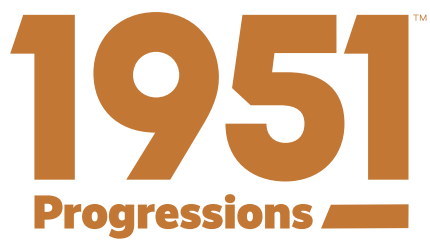
Claims

All claims for defective cabinets and accessories must be initiated with the Partner Team and must specify the defects present in the cabinets and accessories. After the manufacturer has had an opportunity to inspect the cabinets and accessories, it will, at their discretion, either replace defective cabinets and accessories or repair any defects in the cabinets and accessories.

Continuous Improvement

In keeping with our policy of continuous product refinement, 1951 Progressions reserves the right to change specifications in design and materials as conditions require.





Photography is for illustration purposes only. Actual colors may vary slightly due to the printing process. For actual color selections, please consult your 1951 Progressions representative. Every effort was made to assure accuracy of the information contained herein at the time of printing; however, 1951 Progressions makes no representations to such accuracies. If you would like further clarification about any of our products or processes, please call the Partner Team.

P.O. Box 1980, Winchester, Virginia 22604

www.1951Cabinetry.com/Progressions | ©2024 American Woodmark Corporation | 51P SPEC GUIDE 3-24